

Measles Information

Signs and Symptoms

What Are Symptoms of Measles?

1. Fever - as high as 103-105 degrees
2. Cough
3. Runny nose (Coryza)
4. Red, watery eyes (Conjunctivitis)
5. Rash

What Does the Rash Look Like?

A red, blotchy rash which begins 2-4 days after other symptoms have started. The rash typically starts first on the face and upper body.

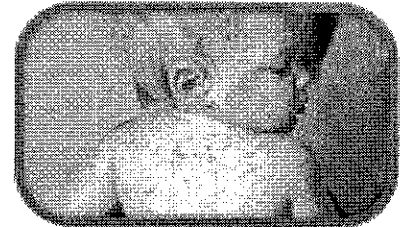
Think You Have the Measles?



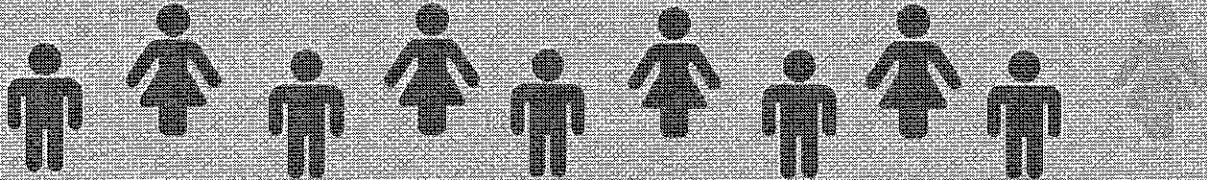
CALL YOUR HEALTH CARE PROVIDER FIRST.

MEASLES IS HIGHLY CONTAGIOUS.

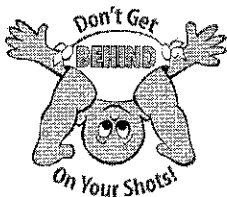
CALLING AHEAD FOR INSTRUCTIONS WILL HELP AVOID EXPOSING OTHERS.



9 of 10 unvaccinated people exposed to measles will become infected.



To find a vaccine or for more information on measles go to StoptheSpreadAZ.org



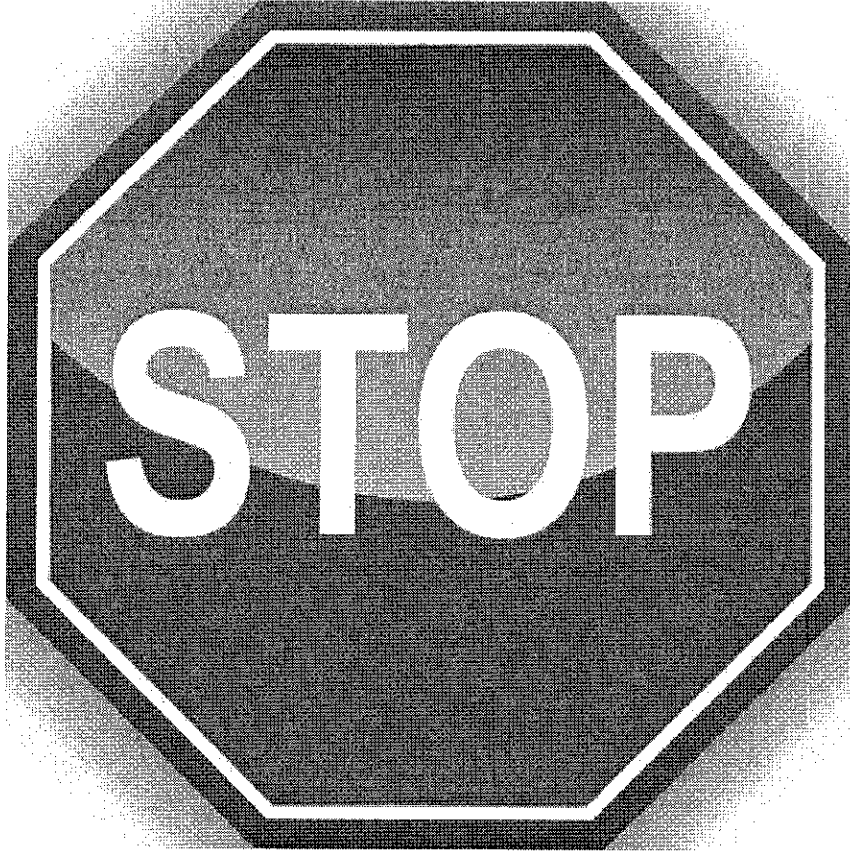
WhyImmunize.org

Get your kids vaccinated. The first dose of MMR is given on or after their 1st birthday.

The second dose of MMR should be given at age 4-6 years. However, it may be given as soon as 1 month after the first dose.

Adults who do not know if they are protected against the measles should call and talk to their doctor.

Vaccinating yourself not only protects you and your family, it also protects those too young to get the vaccine (infants) and those that are not able to get the MMR vaccine.



Think it might be Measles?

Measles is in our State!

**If you have ANY of these symptoms:
Cough, Runny Nose, Red eyes, or Fever OR
RASH!**

**PUT A MASK ON and tell the
receptionist right away.**



¿Cree que tiene Sarampión?

¡Tenemos Sarampión en nuestro Condado!

**Si usted tiene CUALQUIERA de estos síntomas:
Tos, Nariz congestionada o moquenta, Ojos rojos, o
Fiebre O ERUPCIÓN/SARPULLIDO**

**PÓNGASE UNA MÁSCARA y luego dígle a la
repcionista inmediatamente**



News Release

For Immediate Release: May 30,
2016

Additional Measles Case Confirmed and Potential Exposure Areas Expanded

Expanded Exposure Areas Include Parts of Pinal and Maricopa Counties

ARIZONA — The Arizona Department of Health Services, Maricopa County Department of Public Health and Pinal County Public Health Services District have confirmed an additional case of measles stemming from the outbreak at the private detention center in Eloy, bringing the total number of confirmed cases to eleven. The potential exposure area is being expanded because some of the identified cases may have exposed other people within Pinal and Maricopa Counties.

"This is an evolving situation, and given how contagious measles is, public health will continue to update our communities on places of potential exposure," said Dr. Cara Christ, director of the Arizona Department of Health Services. "People who have a rash and fever must call their healthcare provider or emergency department before going to let them know they may have measles. This is vital to help stop the further spread of the disease."

Symptoms appear seven to 12 days after exposure but may take up to 21 days. It begins with fever (101 F or higher), red, watery eyes, cough and runny nose and is followed by a rash that is red, raised, and blotchy. The rash begins on the face at the hairline and moves down the body. The rash may last five to six days.

Newly identified public exposures:

- Wednesday, May 18, 2016:
 - Denny's, 1851 E Florence Blvd Casa Grande, from 2 to 5:30 p.m.
 - Wal-Mart Pharmacy, 1741 E Florence Blvd Casa Grande, from 3:30 to 6:30 p.m.
- Thursday, May 19, 2016: Wal-Mart Pharmacy, 1741 E Florence Blvd Casa Grande, from 5 to 8 p.m.
- Daily between May 20, 2016 and May 29, 2016: Circle K, 2382 N Pinal Ave Casa Grande
- Friday, May 20, 2016:
 - Safeway, 1449 N Arizona Blvd, Coolidge, from 4 to 7 p.m.
 - Golden Corral, 2064 E Florence Blvd, Casa Grande, from 8 to 11 p.m.
 - Ross, 1004 N Promenade Pkwy, Casa Grande, from 9 p.m. to midnight
 - Walmart, 1741 E Florence Blvd, Casa Grande, from 10 p.m. to 1 a.m.

- Corner Store, 2182 E Florence Blvd, Casa Grande, from 10 p.m. to 1 a.m.
- Friday, May 27, 2016: Cheddars, 2530 W Chandler Blvd, Chandler, from 5 to 9 p.m.
Previously reported public exposures:
- Saturday, May 21, 2016: Harrah's Ak-Chin Casino, 15406 North Maricopa Road in Maricopa from approximately 6 a.m. to 2 a.m. (May 22).
- Sunday, May 22, 2016: Arco AM/PM Store, 2245 East Florence Boulevard in Casa Grande from 8:30 to 11 a.m.
- Multiple visits to the Apostolic Assembly - The Faith, 424 E. Frontier Street in Eloy on Sunday May 15 from 1 to 3 p.m., Monday May 16 from 6 to 8 p.m., and Wednesday May 18 from 7 to 8:30 p.m.
- Tuesday, May 17, 2016: Villa Oasis High School graduation, 3740 N Toltec Road in Toltec from 6 to 9 p.m.

What to do if you think you have measles:

- If you have a healthcare provider, contact him/her by phone and let them know that you may have been exposed to measles. They will let you know when to visit their office so as not to expose others in the waiting area.
- If you do not have a health care provider, you may need to be seen at your local hospital emergency room or urgent care center. Please call before going to let them know you may have measles.

For more information on measles' signs and symptoms or where you may find vaccine, please check with your healthcare provider or your county health department.

You are immune to measles if you have received two measles, mumps, and rubella [MMR] vaccines or were born before 1957 and have received one MMR vaccine. Health care providers are required to report suspect cases of measles to their local health department.

Public health continues to investigate contacts and places of exposure for these new cases. The Department will continue to provide updates and additional information on confirmed cases and potential public exposure as information becomes available.

For information on signs and symptoms of measles, or where you can find vaccine, please visit StoptheSpreadAZ.com. Medical questions should be directed to your health care provider. For outbreak-related questions, community members may call 602-839-2275.

#